

# DGT PTT Connect

group communication system



**Push-To-Talk  
communication**

**Video streaming**

**Group and individual  
calls**

**Integration with DMR,  
TETRA, NXDN**

**Map module**

**Multimedia messages**

**Encryption**

**GSM, WIFI, LTE450**

**Tailored to customer's  
needs**

DGT PTT Connect is a Push-To-Talk solution that employs terminals based on IP infrastructure instead of classic two-way radios. Both Android and iOS smartphones can be used for voice and video calls.

DGT PTT Connect offers all the functionalities available in digital radio systems as well as video calls in group mode and fast transfer of high resolution photos or other files such as plans, maps and diagrams.

What is important, the system does not require the construction of dedicated radio infrastructure because it can use mobile telephony operators' networks. Because of this, system users are not limited by the range of the base station, as is the case in classic radio systems.

System users can make group (one-to-many) and individual (one-to-one) voice and video calls.

The positions of all group members can be tracked with the integrated map module. The system features a motion sensor that automatically sends an alert with location data e.g. if the user falls down.

DGT PTT Connect can function as an autonomous system or alternatively can be integrated with the existing radio system in use, e.g. DMR, TETRA or NXDN. Its integration with analogue radios is also possible.

Voice calls are encrypted. The encryption method is in compliance with the standards set by the Polish Ministry of Interior and Administration but can be adjusted to the individual needs of organisations.



**"Border Guard Laurel"** – Award of the General Commandant of the Border Guard  
**"Bronze Police Star"** – Award of the General Commandant of the Police awarded for DGT PTT Connect during Europoltech 2019 fair

## DGT PTT Connect system functionality

### • Intuitive

DGT PTT Connect is easy to use and does not require long training.

### • No geographical limitations

System users can be in any location, practically anywhere in the world.

### • Safety

Each user has a unique login and password created by the system administrator. Communication is encrypted with system's own or user's key.

### • Individual calls

Calls to available system users can be made from the contact list or from the map.

### • Group calls

The user can select one of the predefined groups (equivalent to a two-way radio channel) and communicate with its members at a press of the PTT button.

### • Video calls

Video calls can be made with the use of the built-in camera in the terminal (smartphone) or an external camera. Video calls are made in the group mode (one-to-all).

### • Priority calls

Alerts or high priority calls can automatically interrupt lower priority calls.

### • Text and multimedia messages

Text and multimedia (image, video, sound) messages can be sent individually or to the whole group.

### • Emergency call

By pressing the ALARM button, the user sends a call for help to the other group members, who also receive the location data of the person requesting assistance.

### • Man Down & Lone Worker

If the user remains immobile for a specified time, the system will automatically request activity confirmation. If no confirmation is received, the system will alert the other group members.

### • Call recording

All communication is recorded on the server and in the application.

### • User location

The use of GPS enables the display of the current location of individual users and the route travelled by each of them. The integrated map module offers online or offline maps. Each user of the system (not only the dispatcher) can keep track of the position of group members, provided that they agreed to share their position (configuration).

### • Heavy duty operation

DGT-recommended terminals ensure reliable communication, whatever the outside conditions.

### • Integration with other telecommunication systems

DGT PTT Connect can be integrated with other telecommunication systems, above all with the existing systems already in use, e.g. DMR, TETRA, NXDN.

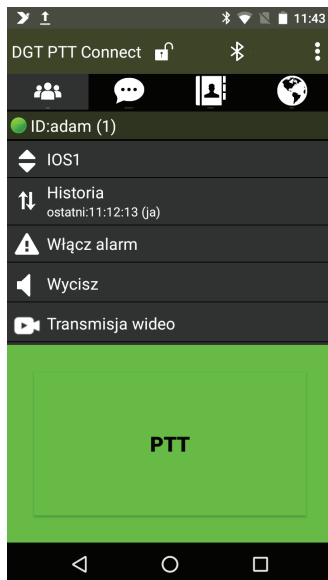
### • External accessories

DGT PTT Connect can operate with external accessories connected via cable or Bluetooth, such as headsets, induction loops, external PTT buttons or wearable cameras.

### • Operation with dispatch system

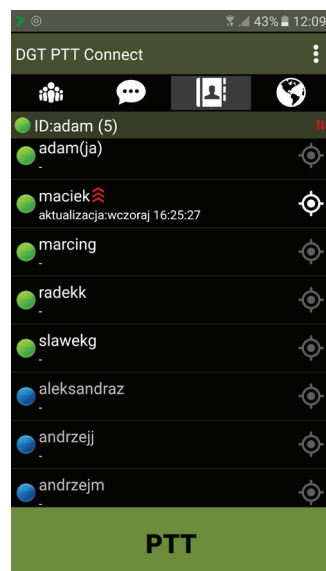
The DGT MCS dispatch system works with DGT PTT Connect in the same way as with other radio systems. The dispatcher can use all its functionalities, including video calls.

## DGT PTT Connect App



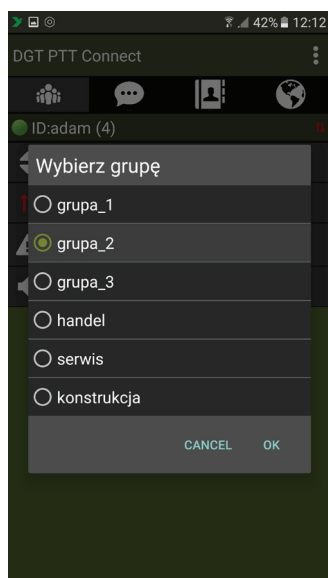
### Home screen

*Main menu.*



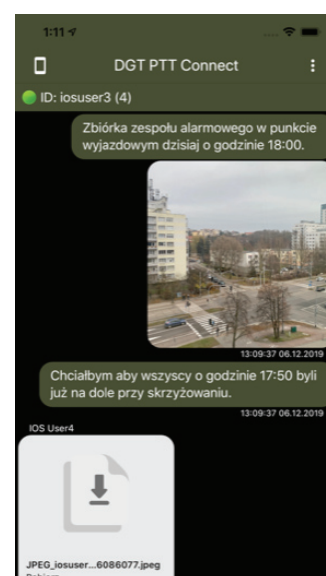
### Address book

*The list shows all members of the active talkgroup, with highlighted online users.*



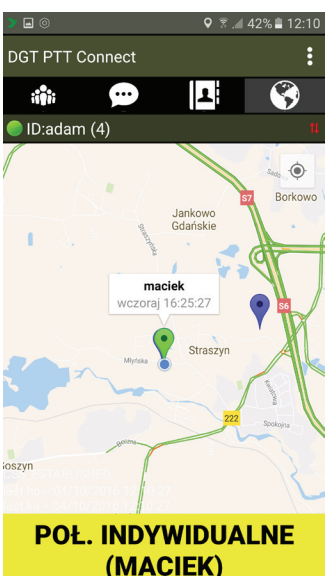
### Group selection

*The user can change the talkgroup according to his rights.*



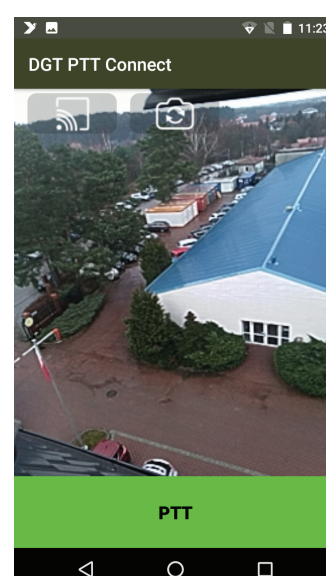
### Multimedia messages

*Text messages as well as images, videos or other files can be sent using the system.*



### Map module

*Any authorised app user can track other members of his group on the map.*

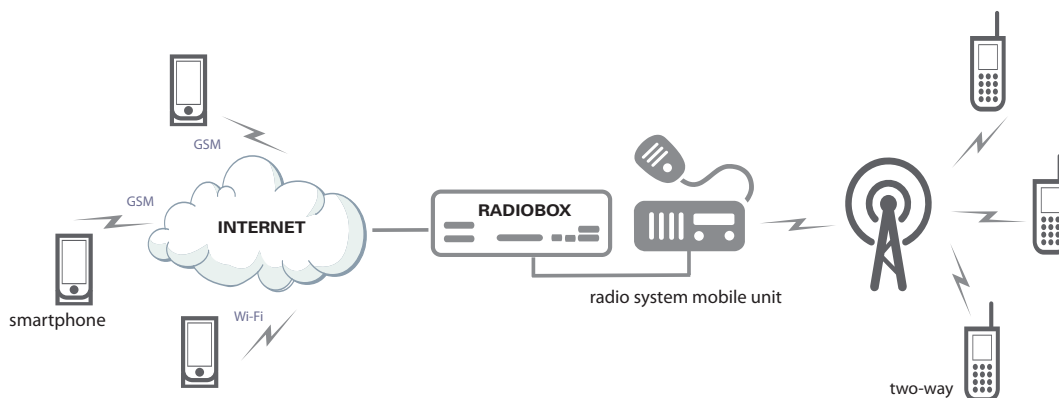


### Video transmission

*Real-time group video transmission.*

## Expansion of radio system functionalities

The DGT PTT Connect system can be easily integrated with any digital or analogue radio system via the DGT radio gateway (Radiobox). Following the integration (figure below), the radio communication system gains a number of new functionalities.



## Additional functionalities of the radio system

- **Extended range** – app user can communicate with two-way radio users even outside the range of the base station. In practice, they can be in another city or another country,
- **Map module** – any authorised app user can track other members of their group on the map,
- **Recording** – all communication is recorded,
- **Safety** – communication can be encrypted,
- **Lower costs** – radio system expansion through integration with DGT PTT Connect does not require expansion of radio infrastructure.

## Related products:

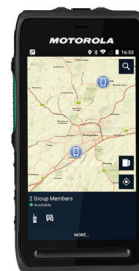
### Critical Communication Mobile Device

- Radio communication + 2 independent GSM modules + own power supply + satellite communication
- Automatic selection of the bypass routes.



### Motorola LEX L11

LTE TERMINAL for critical communication designed with public security services in mind. All the features and functions of this rugged device have been carefully selected to ensure easy operation. LEX L11 offers powerful and clear sound, intuitive operation and long battery life.



### SONIM XP8

Ultra-reliable, ultra-robust smartphone designed to provide intelligent audio and video communication to those who need it, whatever the situation or weather conditions.



### W60 Terminal

Audio terminal with 3G, GPS, Wi-Fi and Bluetooth. Excellent for use in all but very demanding conditions and where there is no need for video calls.

